

189/US2 Bolton-Waterbury Wildlife Crossings



2015-07-18 7:19:08 PM M 1/3 72°F



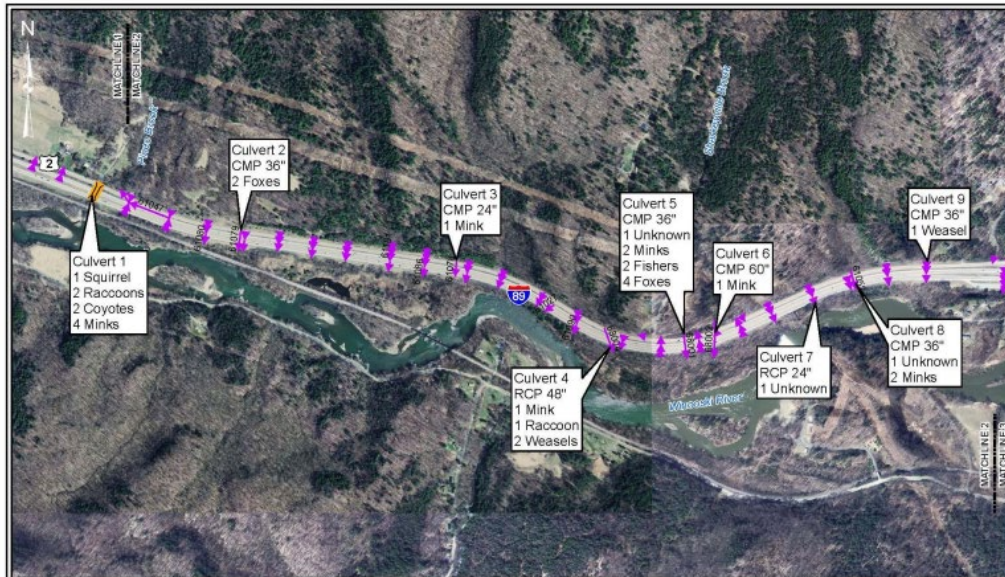
C74



Bolton-Waterbury Study

- ▶ VTrans and VF&WD joint study of Bolton-Waterbury corridor 2014-2016
- ▶ Study identified I89 and US2 as fragmenting features

Figure 42. Culverts and bridges used by wildlife (2)



Legend
 VTrans Large Culvert Inventory (VCGI)
 VTrans Small Culvert Inventory

0 1,000 2,000
 Feet

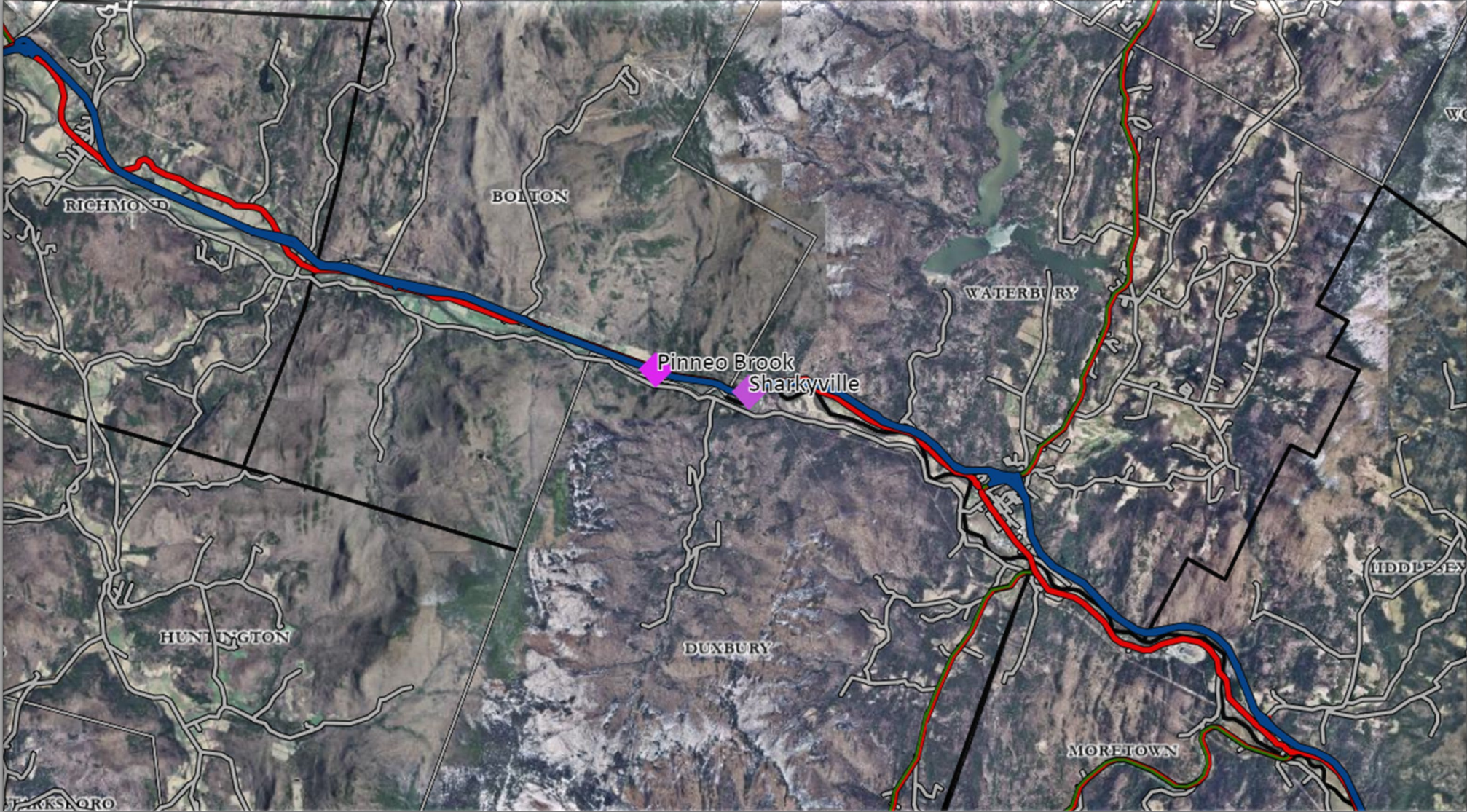
I-89 WILDLIFE CORRIDOR
 VERMONT
**CULVERTS & BRIDGES
 SPECIES TRACKS 2**
 SCALE: AS SHOWN DATE: MAY 2016 CREATED BY: ECM

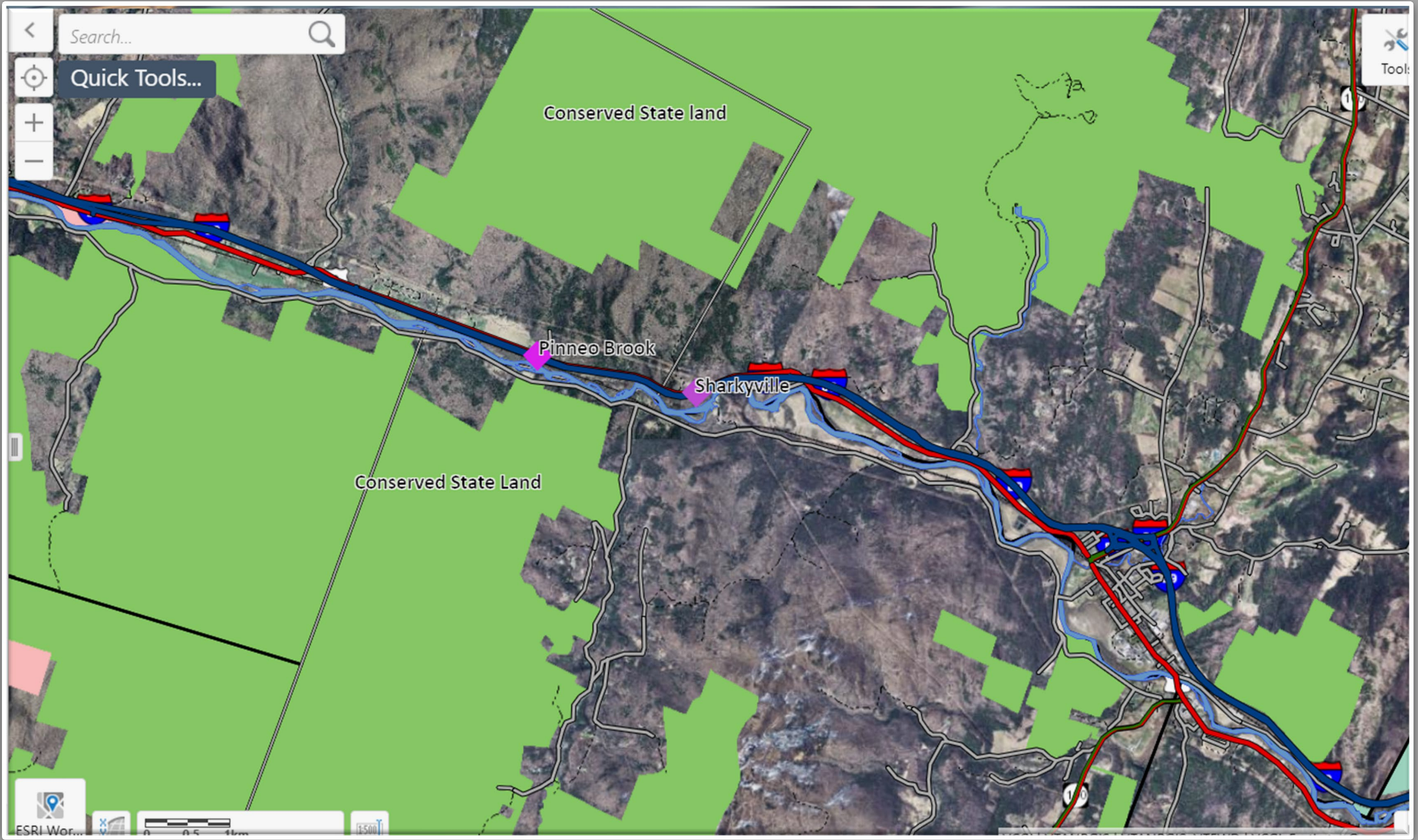
**Bolton Waterbury STP 2709(1)
 Wildlife Connectivity Study
 Final Report**

Prepared by
McFarland Johnson
 In association with
James S. Andrews
Northern Stewards

July 2016

Project Area

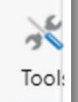




Search...



Quick Tools...



Tools

Conserved State land

Pinneo Brook

Sharkyville

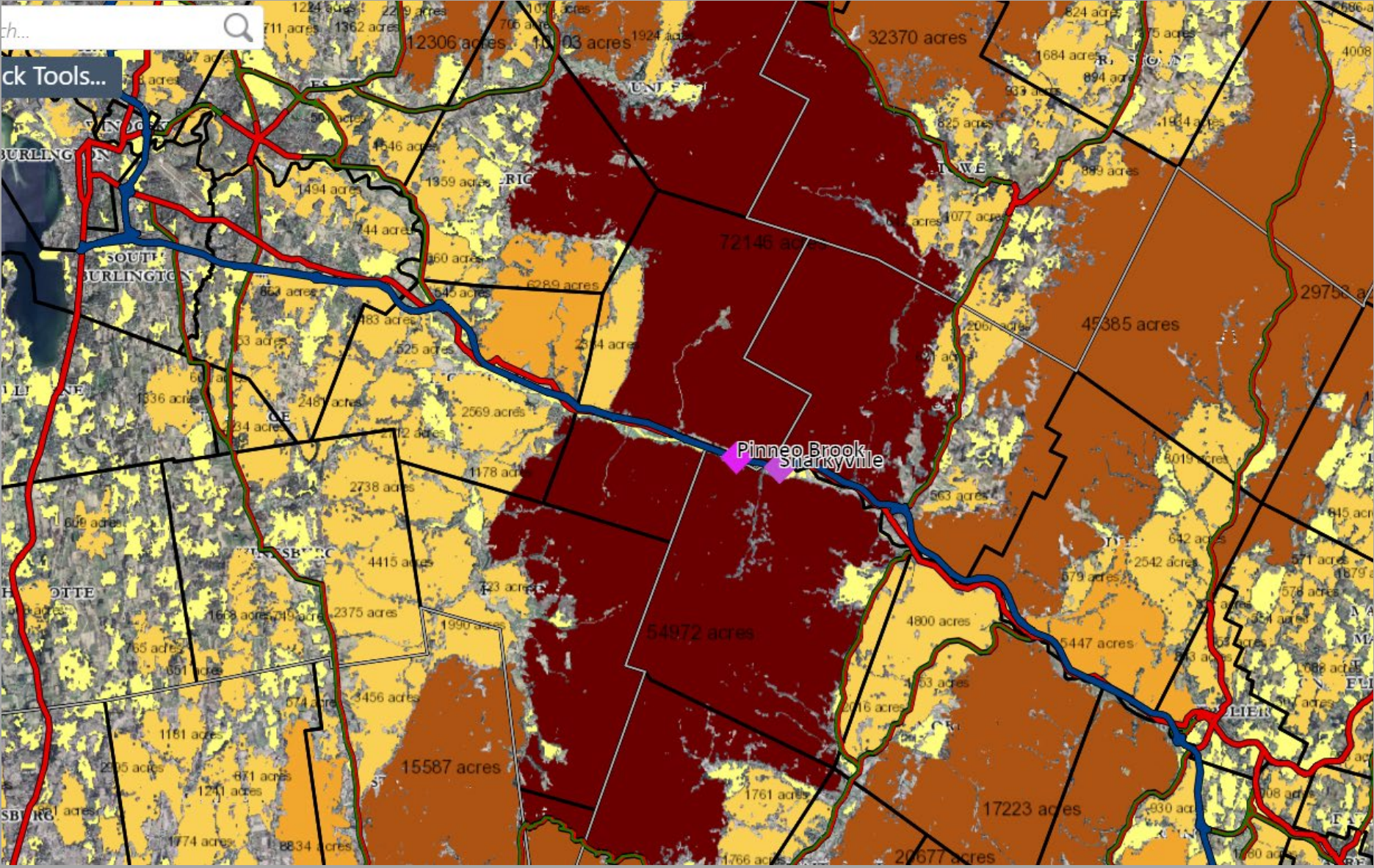
Conserved State Land



ESRI Wor...



NW Vermont

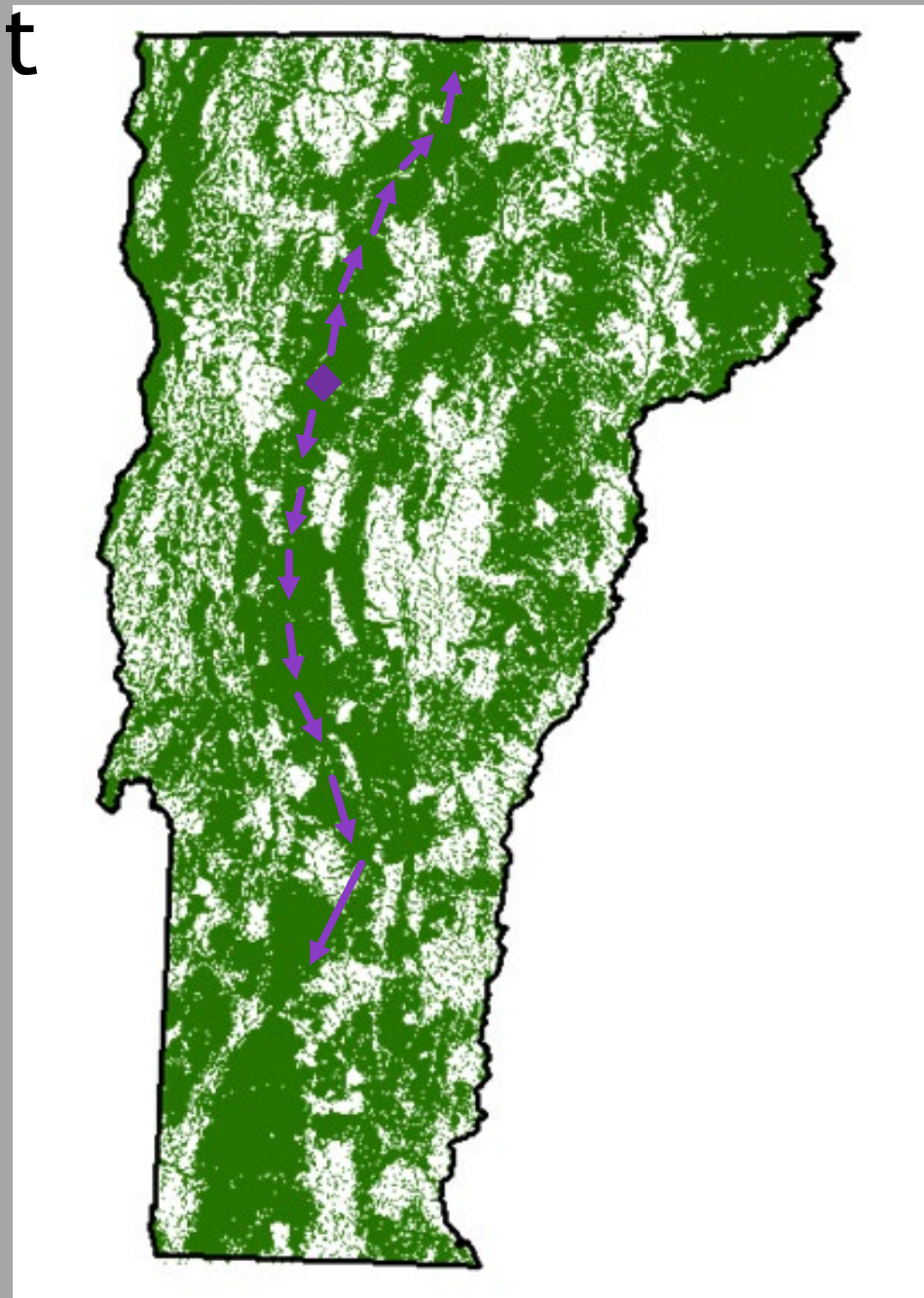


Statewide Significance - Vermont Conservation Design

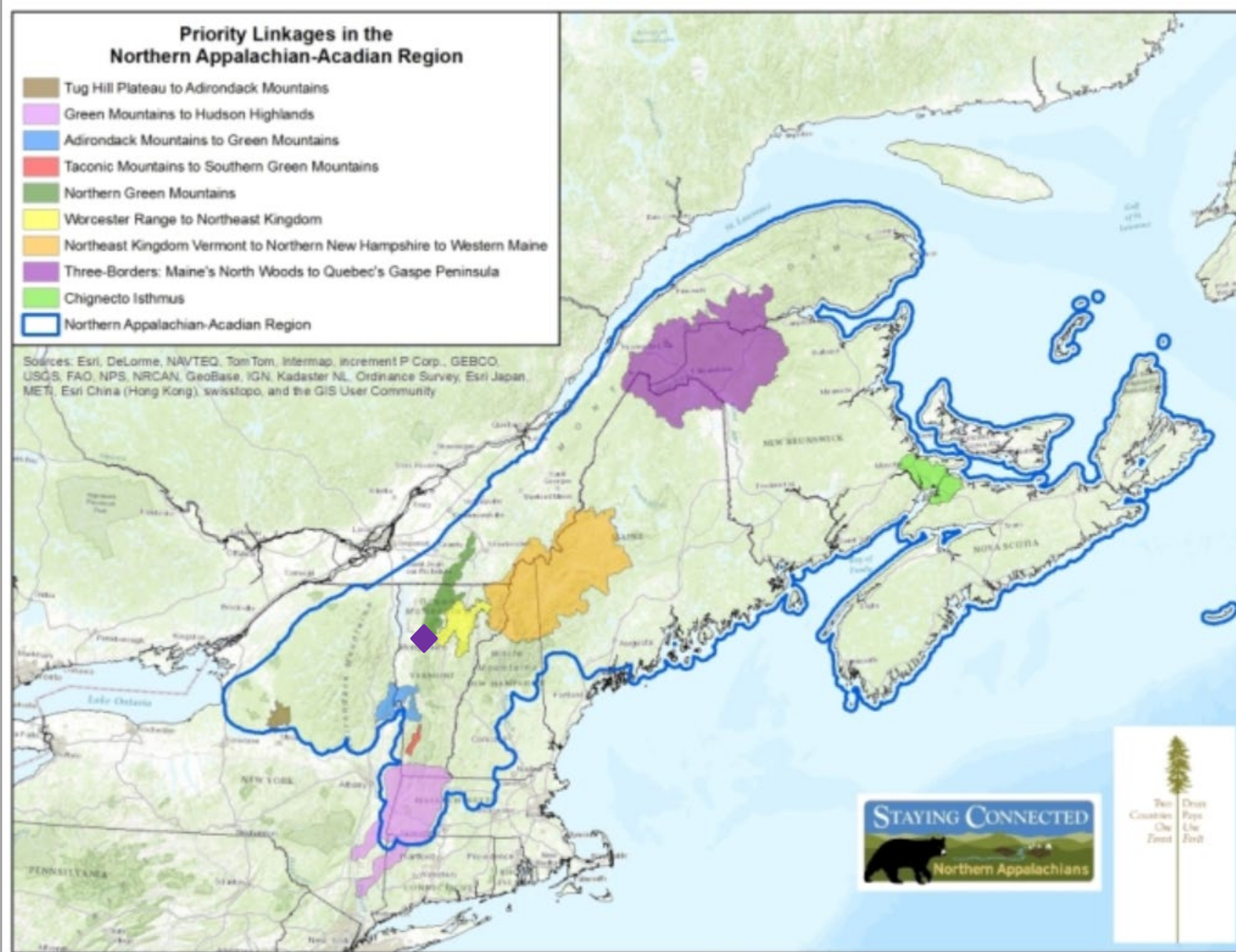
Intact

Connected

Diverse



Regional Significance





Upstream Inlet



Downstream Outlet



Moose walking past culvert (image from B-W study)

Existing Conditions - Sharkeyville Culvert

- ▶ Structural: PID 68002, 60in Metal Pipe (385ft long), 30ft fill
- ▶ Hydraulics: 22% of Bankfull
- ▶ Wildlife: No passage available

