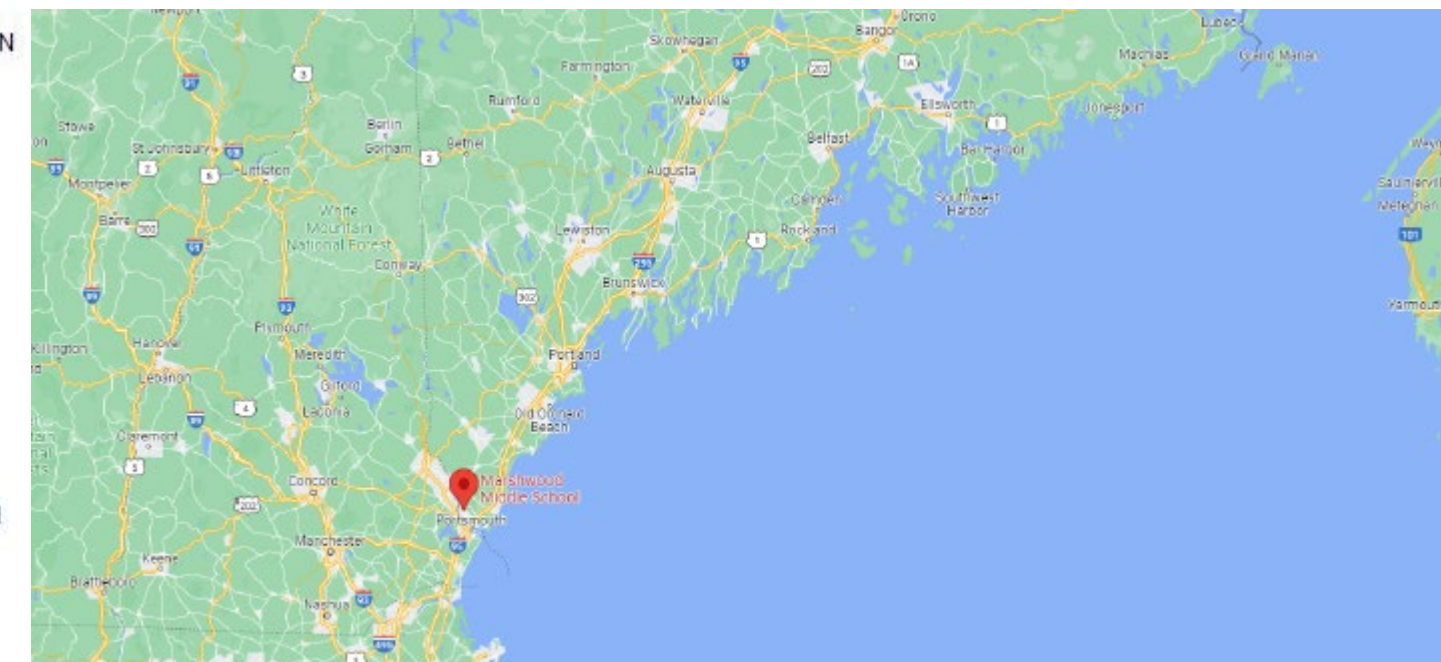
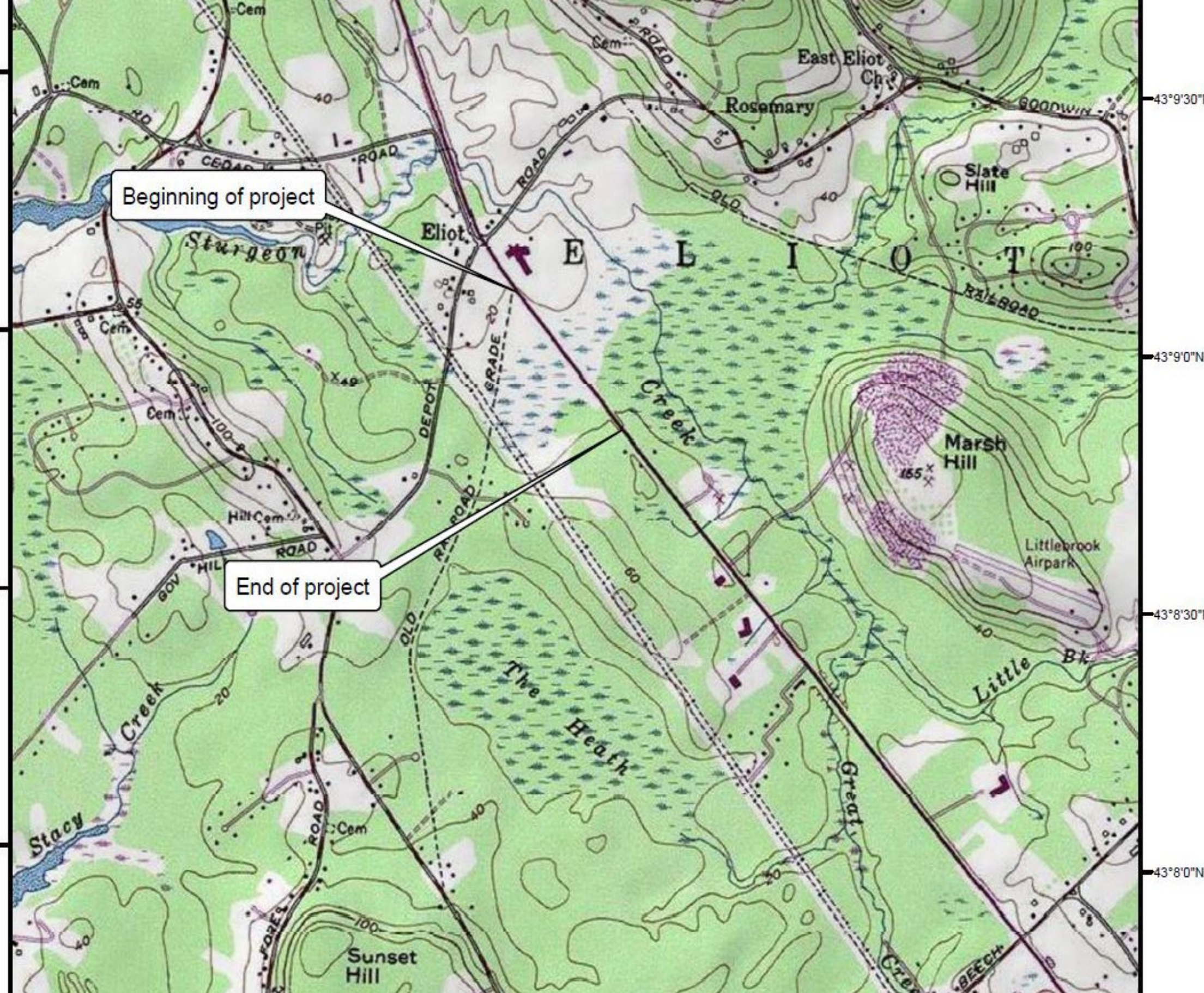


MaineDOT Turtle and small animal crossing ELIOT, ME

Richard Bostwick Biologist
MaineDOT





Early Summer growth



Late Summer



Early Spring

PRE-BUILD CONDITIONS



BUILDING THE FENCE 2019



FINISHED FENCE

SNOW ISSUES WITH FENCE





TREE FALLS ON IT OR IT GETS RUN OVER

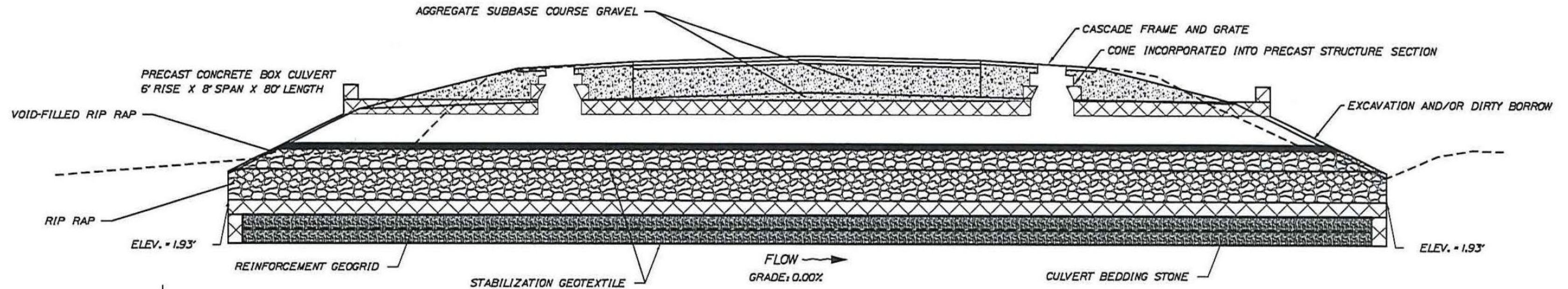
EAST SIDE CULVERT LOCATION

Old culvert
location



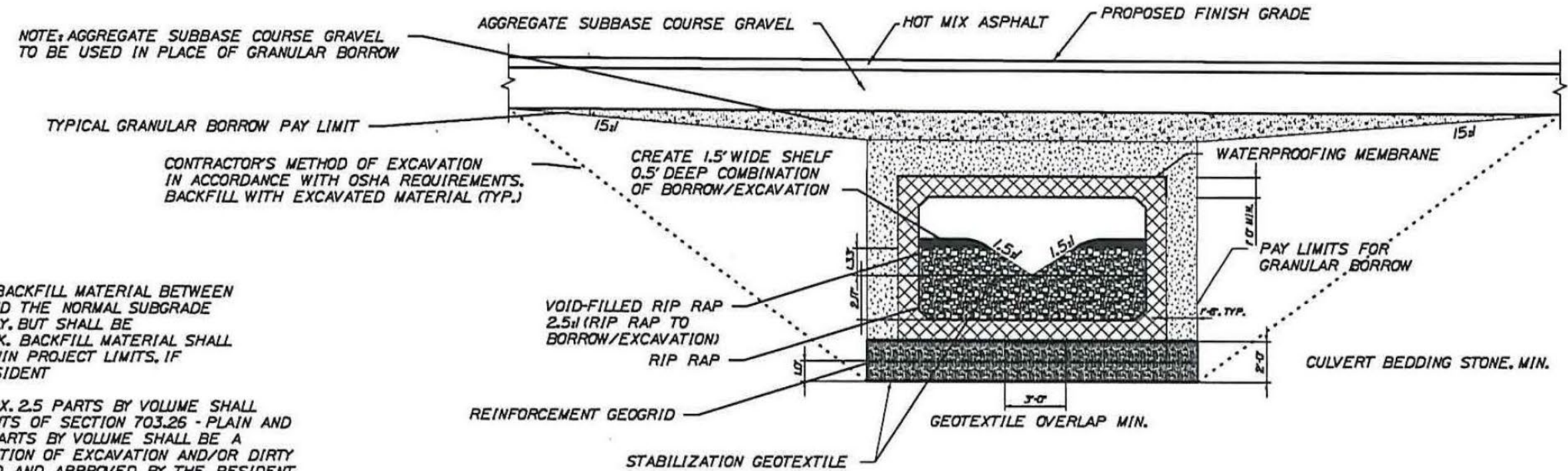
PRECAST CONCRETE BOX CULVERT PLAN VIEW

NOT TO SCALE



PRECAST CONCRETE BOX CULVERT - LONGITUDINAL SECTION

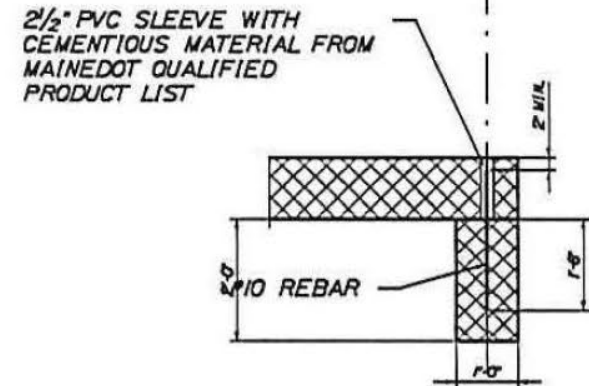
NOT TO SCALE



TYPICAL PRECAST CONCRETE BOX CULVERT SECTION

PRECAST CONCRETE TOE WALL DETAIL

NOT TO SCALE



PRECAST CONCRETE BOX CULVERT NOTES

1. CONSTRUCTION, HANDLING, AND ASSEMBLY OF THE PRECAST UNITS SHALL BE IN ACCORDANCE WITH THE MANUFACTURER'S SPECIFICATIONS AS APPLICABLE.

2. THE CONTRACTOR MUST USE A "CLAMSHELL" TYPE STRUCTURE. JOINING OF THE TOP AND BOTTOM SECTIONS SHALL BE IN ACCORDANCE WITH THE MANUFACTURER'S SPECIFICATIONS.

3. THE PRECAST CONCRETE BOX CULVERT SHALL BE BEDDED ON A 2" THICK LAYER OF CULVERT BEDDING STONE (UNDERDRAIN BACKFILL MATERIAL TYPE C) WITH A LAYER OF REINFORCEMENT GEOGRID AT THE CENTER. THE CULVERT BEDDING STONE SHALL BE WRAPPED IN STABILIZATION GEOTEXTILE. PAYMENT WILL BE MADE UNDER THE APPROPRIATE CONTRACT ITEMS.

6. THE FURNISHING AND PLACING OF BACKFILL MATERIAL BETWEEN THE GRANULAR BORROW PAY LIMIT AND THE NORMAL SUBGRADE LINE WILL NOT BE PAID FOR DIRECTLY, BUT SHALL BE CONSIDERED INCIDENTAL TO THE WORK. BACKFILL MATERIAL SHALL BE FROM SUITABLE EXCAVATION WITHIN PROJECT LIMITS, IF AVAILABLE, AS DIRECTED BY THE RESIDENT

7. VOID-FILLED RIP RAP WILL BE APPX. 2.5 PARTS BY VOLUME SHALL BE STONE MEETING THE REQUIREMENTS OF SECTION 703.26 - PLAIN AND HAND LAID RIP RAP AND APPX. 1.0 PARTS BY VOLUME SHALL BE A FILLER MATERIAL THAT IS A COMBINATION OF EXCAVATION AND/OR DIRTY BORROW, IN PROPORTIONS DETERMINED AND APPROVED BY THE RESIDENT

8. VOID-FILLED RIP RAP WILL BE PLACED IN WELL MIXED LAYERS.

NOT TO EXCEED UNLESS OTHERWISE AUTHORIZED BY THE RESIDENT

INSTALLATION CULVERT



UNDER CONSTRUCTION



FINAL SETUP







(207) 592-3904



mainedot.gov



Richard.Bostwick@maine.gov



CONTACT ME