

Mitigating the Effects of Collisions on Reptiles and Amphibians



January 25, 2024

David Paulson

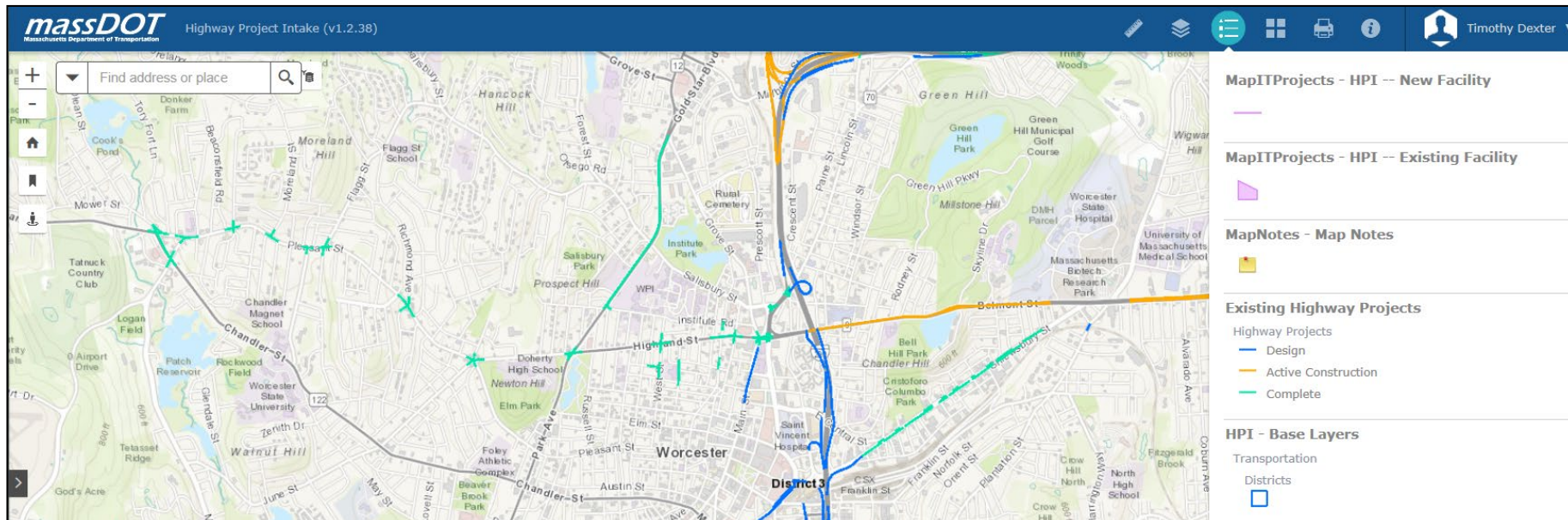
Wildlife and Endangered Species Unit Supervisor,
MassDOT Highway Division

MassDOT/MassWildlife Staff Trainings



Early Environmental Coordination

- MassDOT Project Intake Tool (MaPIT) – provides planning – phase environmental screening
- Environmental Review Checklist for Scoping, Pre-25% Design, and 25% Design phase environmental reviews
- Project specific early coordination meetings



Stream Crossings: Design for Fish/Wildlife *and* Severe Storm Resilience



Stream Crossing Design



Crossing Structures and Permanent Fencing



Crossing Structures and Permanent Fencing



Crossing Structures and Permanent Fencing



Crossing Structures and Permanent Fencing



Fencing Retrofits



Weweantic Bridge

Spans the Weweantic River
Marion and Wareham, MA

Fencing Mitigation

- Completed
- Incomplete

A total of 3100 feet of
bridge was fenced.



Project Initiation

Route 119 Over Beaver Brook in Littleton

- Known wildlife vehicle collision hotspot since 2010.
- The Beaver Brook area has a high diversity of turtle species present, including the Blanding's turtle.
- Aging Infrastructure Identified by District
- Need: Bridge Replacement and Causeway Improvements
- Infrastructure Bill Funding Opportunities: Surface Block Grant Program, Wildlife Crossing Pilot Program, Bridge Investment Program

