

NHDOT Wildlife Collision Avoidance Strategies and Planning

Rebecca Martin, NHDOT Plant and Wildlife Program Manager

NHDOT Bureau of Environment

rebecca.a.martin@dot.nh.gov

NH State Law – Transportation Ch 228

- 228:46-c Wildlife Corridors and Habitat Strongholds

The department of transportation shall consider wildlife corridors and habitat strongholds as defined in RSA 207:1 in road mitigation projects and where feasible as determined by the department, including stream crossings, with expansion of capacity and redesign of culverts for potential changes in precipitation and stream flow. The department shall incorporate wildlife corridors that intersect transportation infrastructure into project planning and mitigation efforts to minimize the effect of roads on wildlife connectivity, as such information is available.

NH Stream Crossing Rules Env-Wt 900

- 904.07 Design Criteria for Tier 2, Tier 3, & Tier 4 Stream Crossings

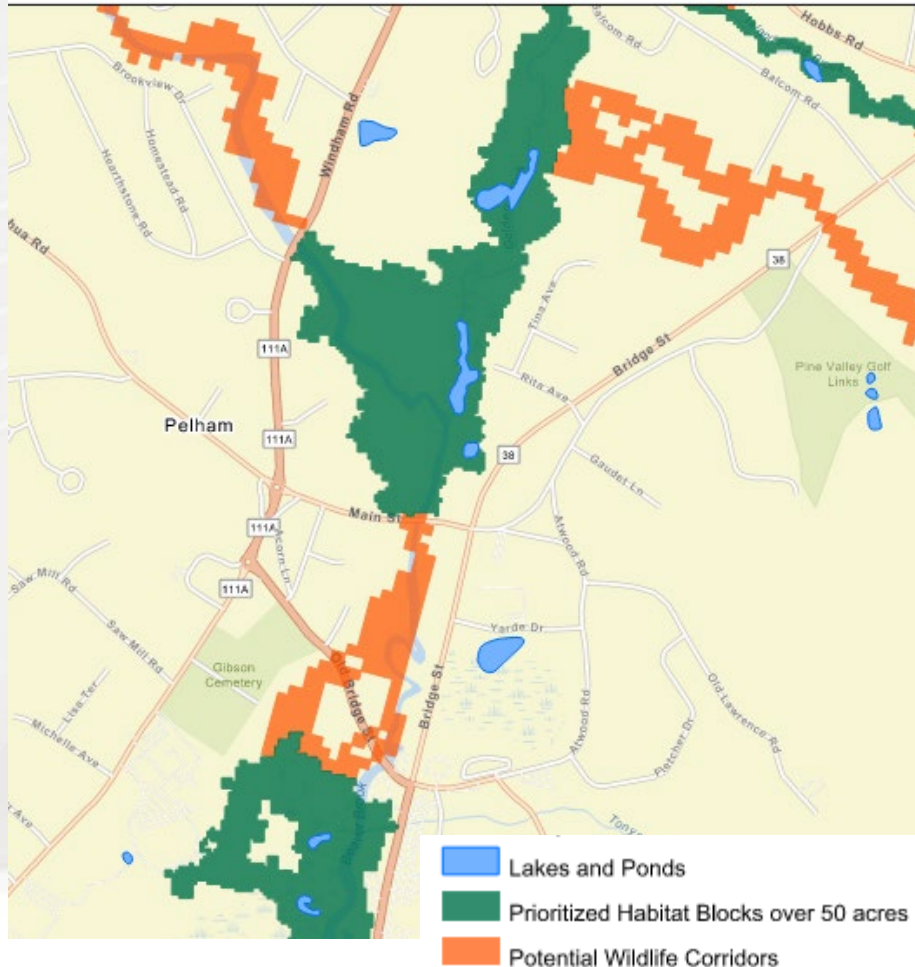
(c) Tier 2, Tier 3, and Tier 4 stream crossings shall be designed: ...

(4) To provide a vegetated bank on both sides of the watercourse or to provide a wildlife shelf of suitable substrate and access to allow for wildlife passage;



NH Wildlife Corridors- Fish and Game

Pelham 16145 Wildlife Corridors



NHB DataCheck Results Letter

NH Natural Heritage Bureau

Please note: maps and NHB record pages are **confidential** and shall be redacted from public documents.

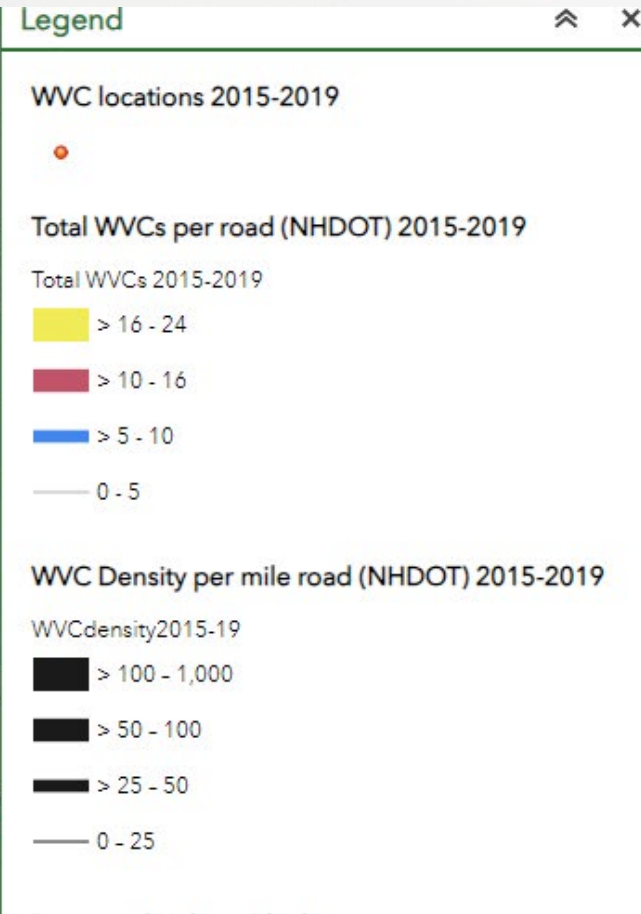
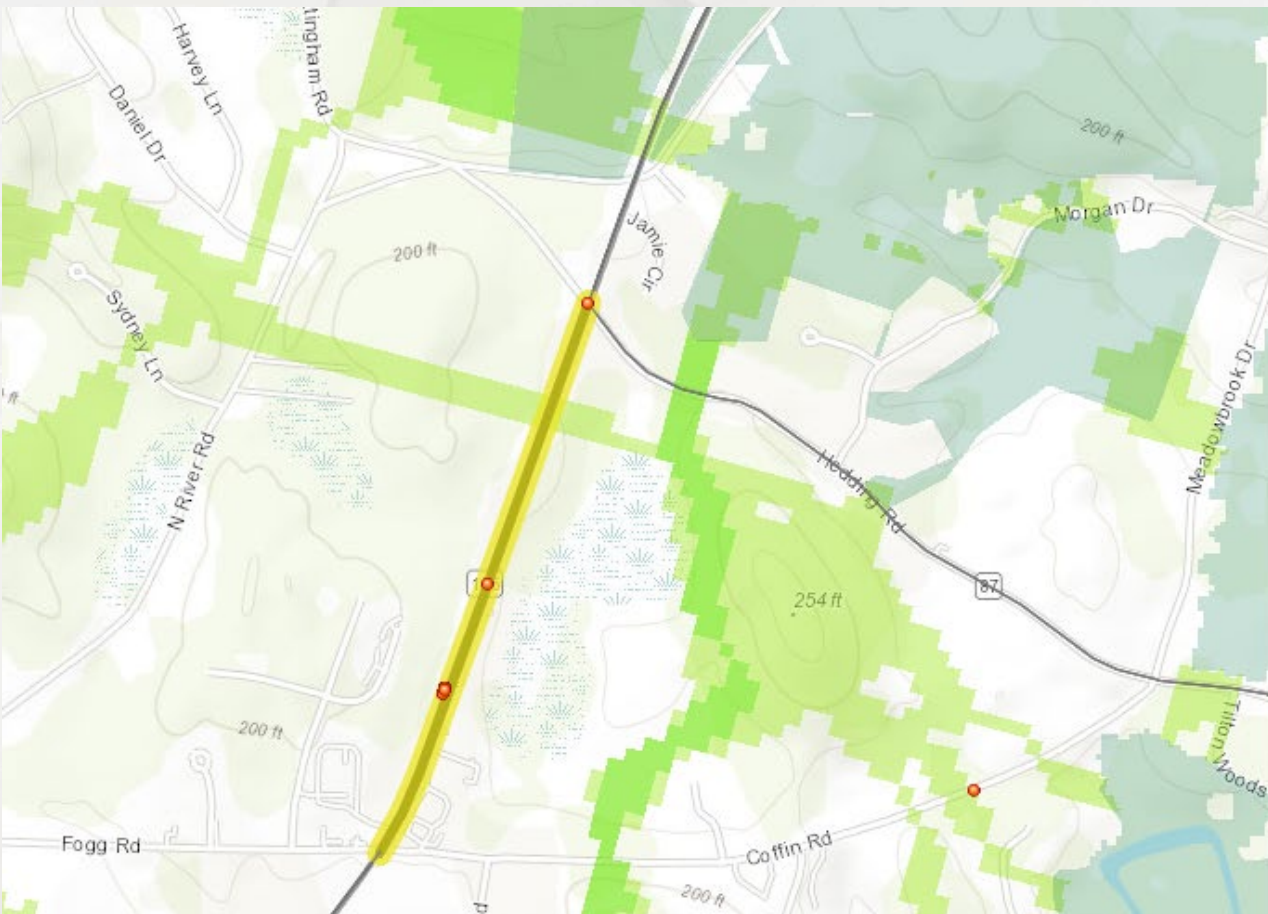
NHB Database Records:

The following record(s) have been documented in the vicinity of the proposed project.

Please see the map and detailed information about the record(s) on the following pages.

Vertebrate species	State ¹	Federal	Notes
American Eel (<i>Anguilla rostrata</i>)*	SC	--	Contact the NH Fish & Game Dept (see above).
Blanding's Turtle (<i>Emydoidea blandingii</i>)	E	--	Contact the NH Fish & Game Dept (see below).
Northern Black Racer (<i>Coluber constrictor constrictor</i>)	T	--	Contact the NH Fish & Game Dept (see above).
Spotted Turtle (<i>Clemmys guttata</i>)	T	--	Contact the NH Fish & Game Dept (see below).
Wood Turtle (<i>Glyptemys insculpta</i>)	SC	--	Contact the NH Fish & Game Dept (see below).

New- PSU WVC Mapper- More to Come in Session 3



Stratford US Route 3 Culvert-

NHDOT District 1

- Partnered with TNC
- National Fish & Wildlife Foundation (NFWF)- New England Forests & Rivers Fund
- Wildlife corridor
- Perched, undersized culvert
- Replaced with 5' x 7' box



Photos courtesy of TNC
& Jim McMahon (D1)

Partnerships

- NH Transportation and Wildlife Work Group
- NH Fish and Game Department
- Plymouth State University
- University of New Hampshire
- NH Audubon
- Northeast Conservation Services
- The Nature Conservancy -NH

Challenges/Opportunities



- Data limitations- WVC Data Collection P2
- Slow culture shift – increasing awareness: webinars, storymap
- Competing project priorities
- Budgets and schedules
- Wildlife crossings are not built into long-term planning (yet)
- Wildlife considerations are not usually incorporated into projects' purpose and needs