

MaineDOT and Wildlife

Use of Highway Structures by Wildlife in Maine

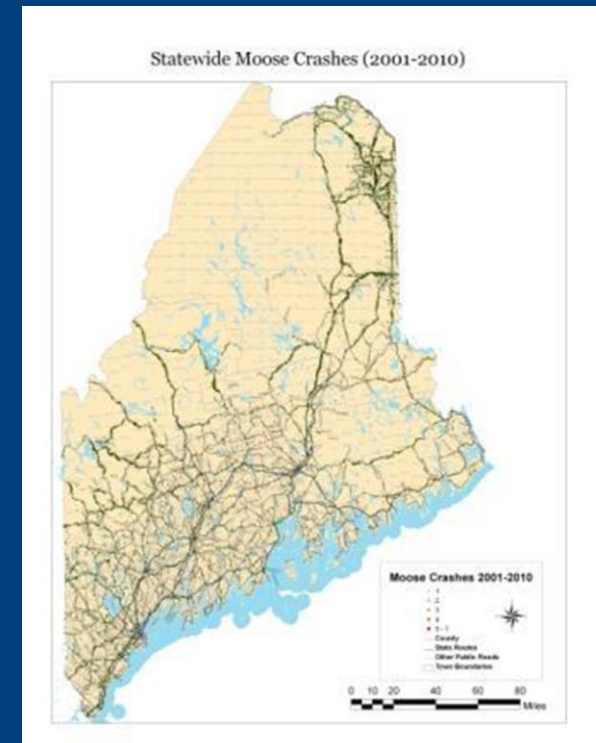
Wildlife impact mitigation

Avoiding and minimizing impacts to wildlife

January 25, 2024 NETC webinar

Strategies

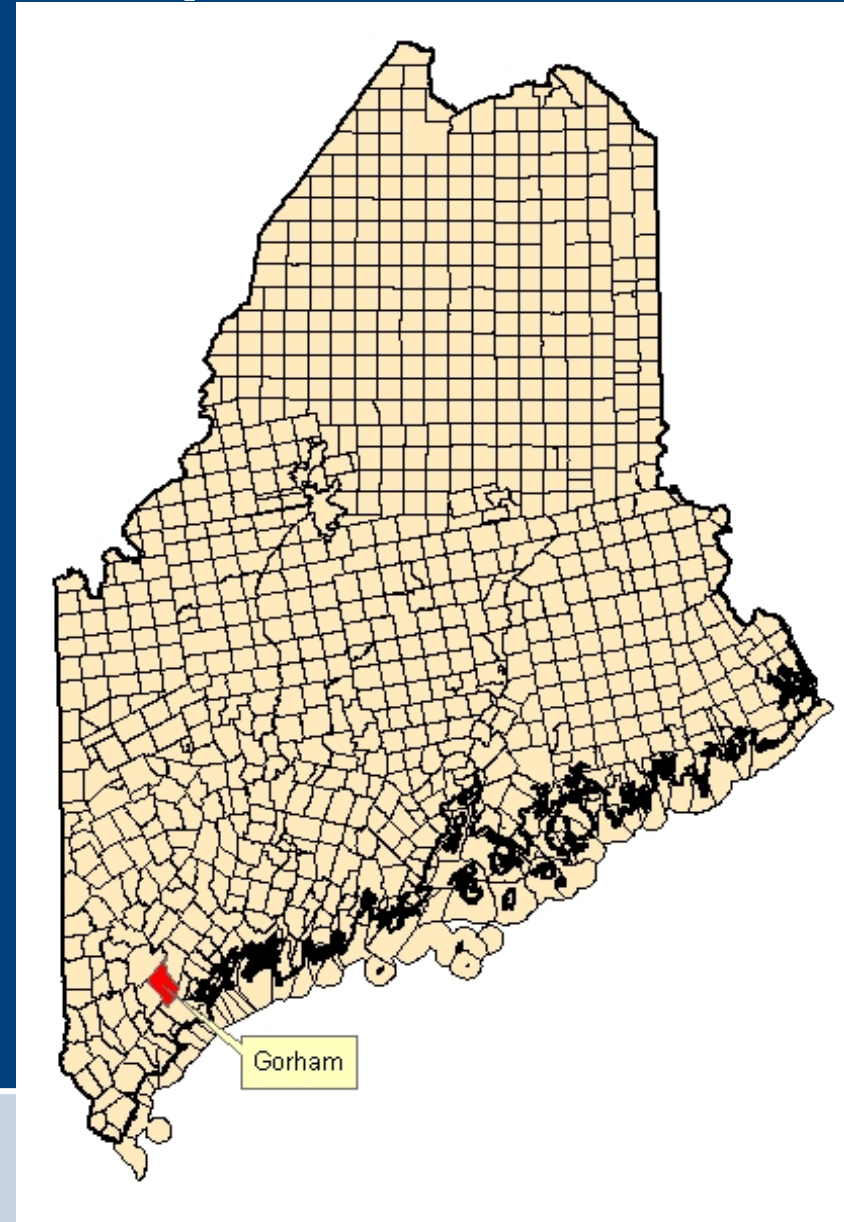
- Strategies for these fall into two categories:
 1. Separating Wildlife from Vehicles
 2. Motorist Awareness Signage



Use of Wildlife Underpasses

Gorham, Maine

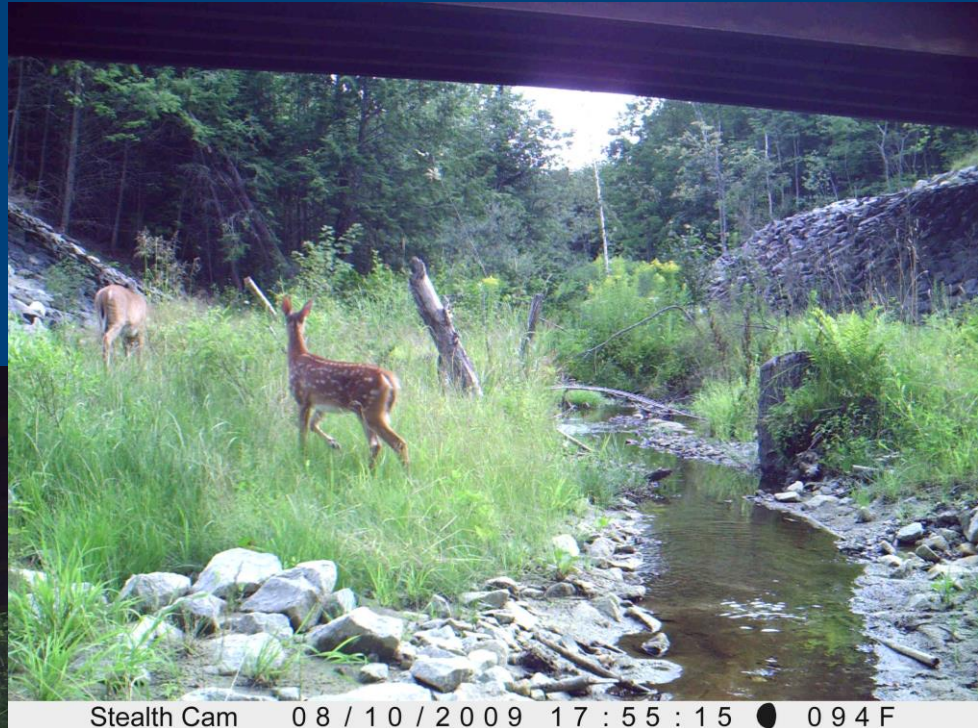
- Longer bridge overpasses
- A 2.4 m (8 foot) fence was installed 0.8 km (0.5 mile) Along all side of the bridges



Use of Wildlife Underpasses

Gorham, Maine

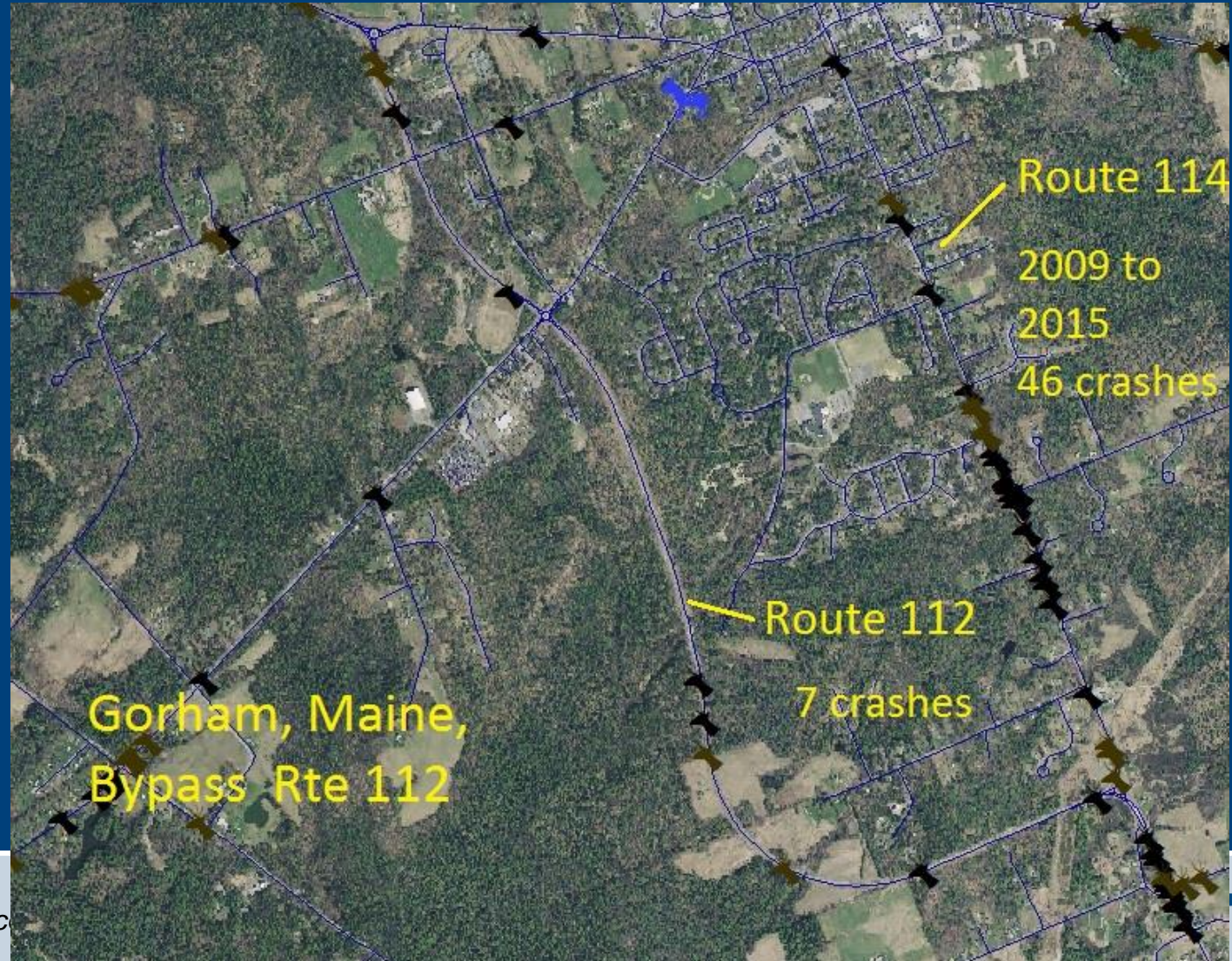
Longer bridge
overpasses



Crash History compared to Parallel Road

Gorham,
Maine

Crash
History
2009 to
2015



Ellsworth

Bridge

Unfenced

Concrete-

Composite arch

Bridge



Arch bridge structure not installed specifically for wildlife passage but for fish passage

Wildlife Use of Underpasses

Ellsworth, Maine



COVERT

Integrity - Competence - Service

Use of Wildlife Underpasses

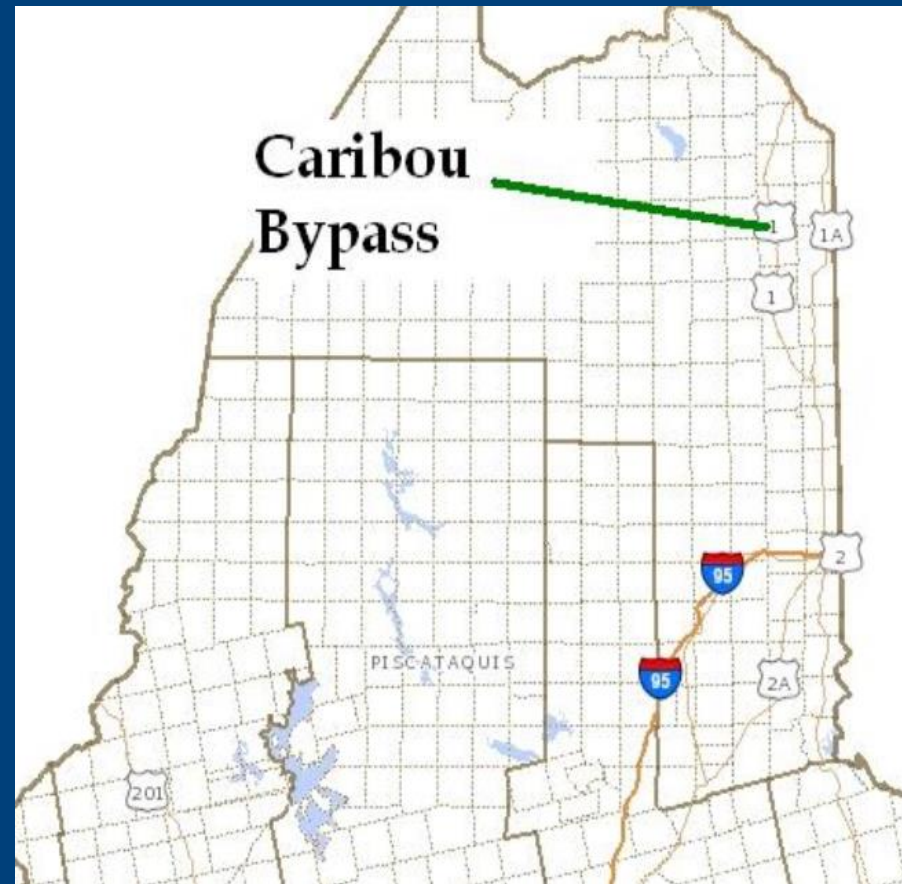
Caribou, Maine

New 2 lane highway
built north of Caribou.

Mostly in farm fields

The south end ran
between the Aroostook
River and an
undeveloped parcel.

Good habitat- Moose, rabbit, and fox tracks seen
on the parcel



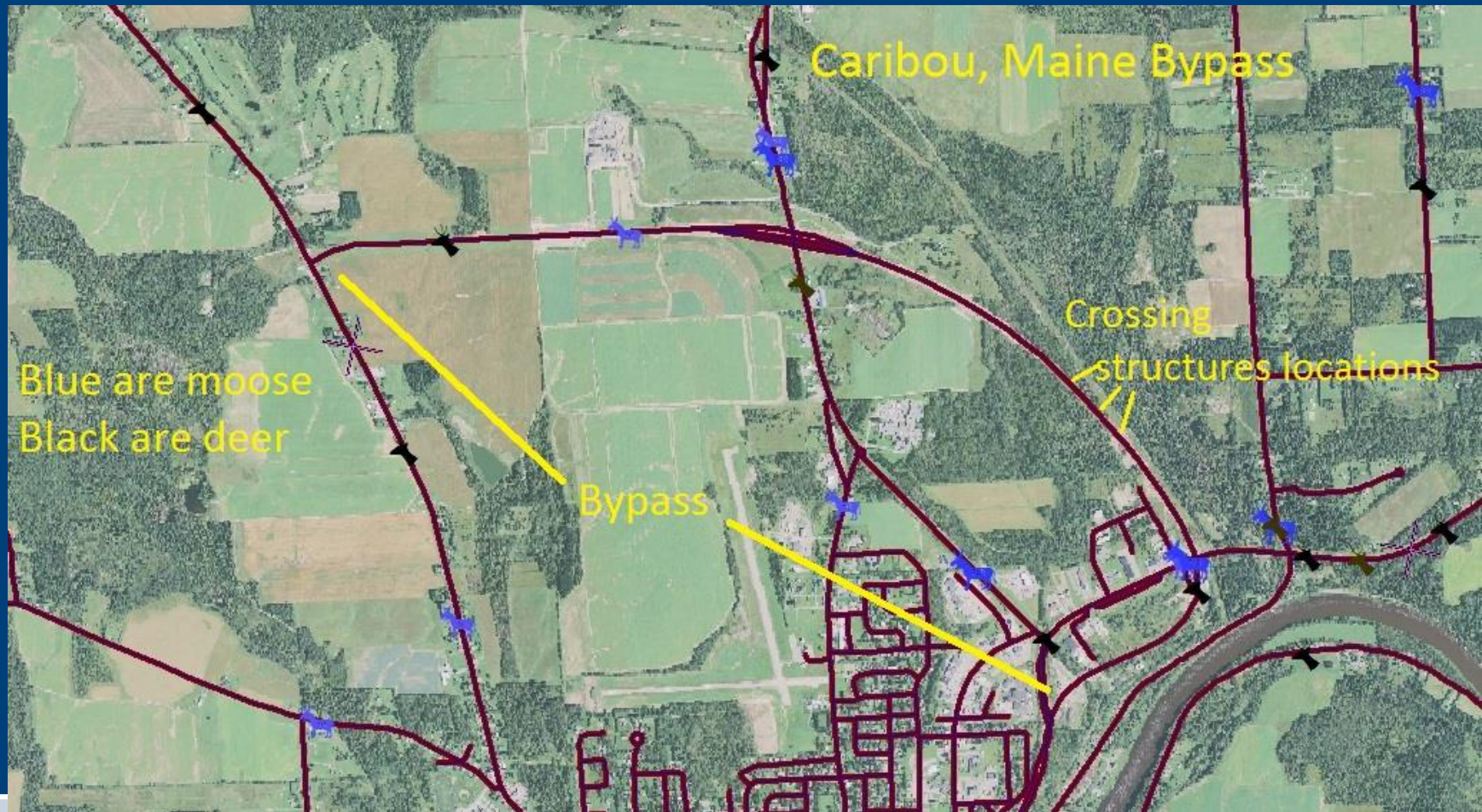
Use of Wildlife Underpasses Caribou, Maine



- One 3.7 x 4.5 m (12 x 15') box

Caribou, Crash history- 2011 to 2015

Two moose, Two deer not in structure area No bear



Caribou Mixed used at trail head (High use by snow machines and ATVs- Wildlife not as much)



Caribou

- 1.2m (48 inch) round culvert use by large and small



Caribou

- 1.2 m (48 inch) round culvert use by large and small



Caribou

- 1.4 (54 inch) high culvert with concrete pad as shelf (Cameras at each end have shown through passage)



Caribou

- 1.4m (54 inch) high culvert with concrete pad as shelf winter use (Cameras at each end have shown through passage)



Signage -motorist awareness

- MaineDOT uses seasonal and permanent signs:
- Permanent - vehicle activated



Signage

- Seasonal signs targeted for certain species and timeframes. Winter - Bald eagle, summer turtles, spring deer



Other strategies

Strategies to keep moose off highways or control where they enter

-log barriers



Other strategies

Strategies to keep moose off highways or control where they enter

-riprap barriers

These and logs
Funnel large
Animals, but do
not prevent
entry onto
highway



Other strategies

Strategies to warn motorists of moose on highways

-Reflected Headlight Stripes

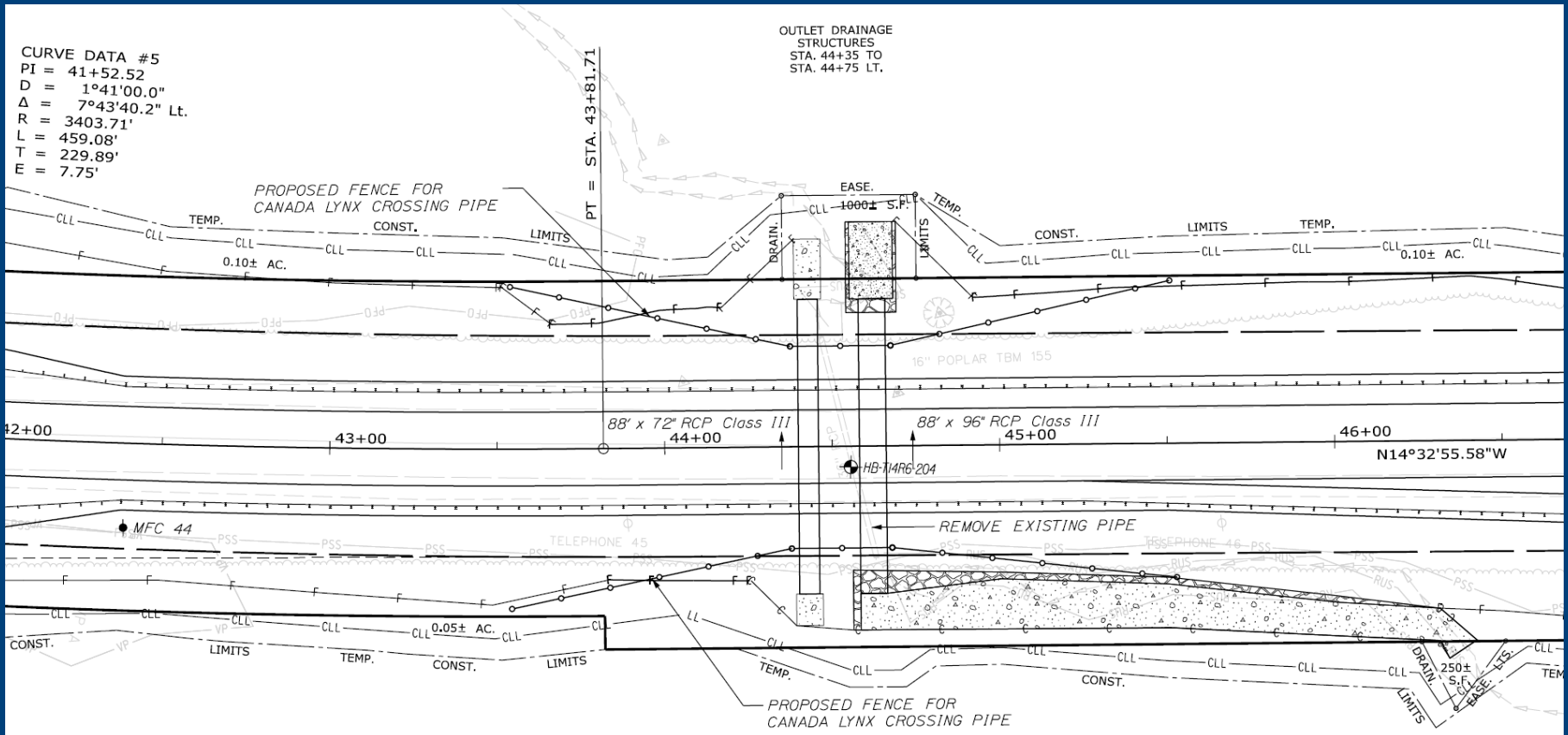


Other Efforts Underway

- Modifying Moose habitat
- filling in Moose wallow areas adjacent to Route 11 in Northern Maine to reduce moose/vehicle crashes.



Canada lynx crossing



Brewer To Eddington New Road



Brewer To Eddington New Road, under construction Bridge abutment with wildlife shelf

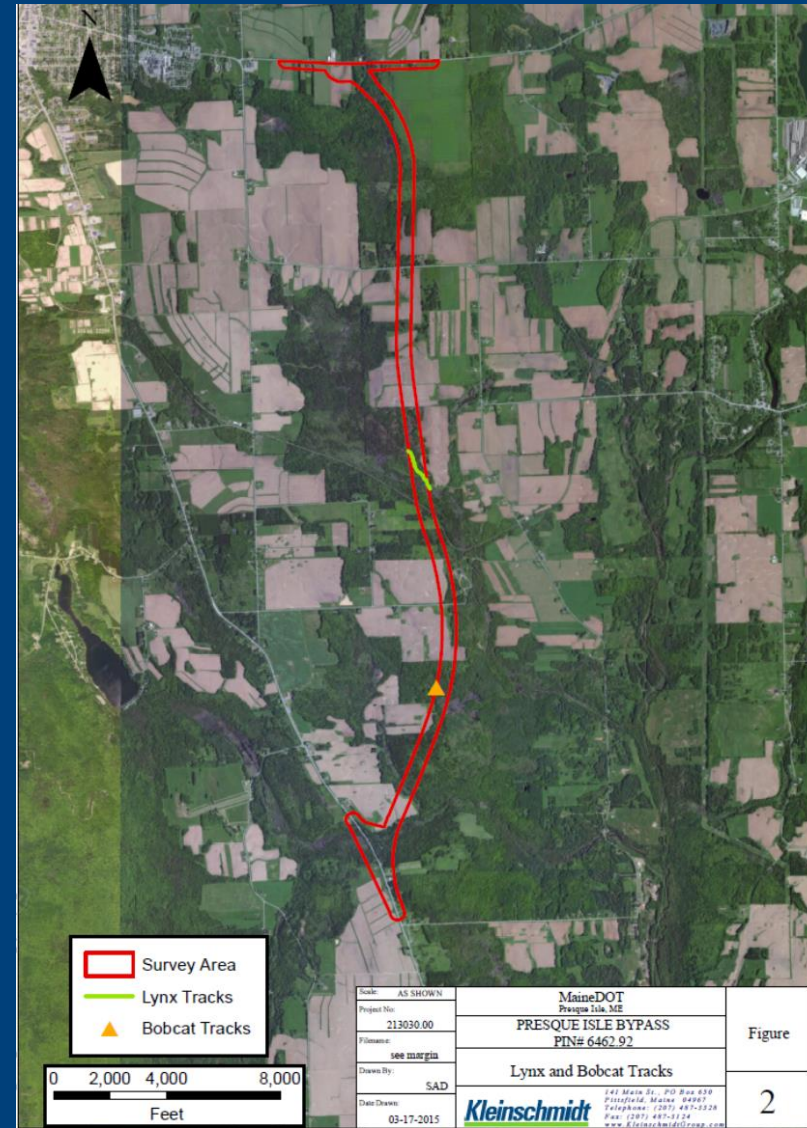
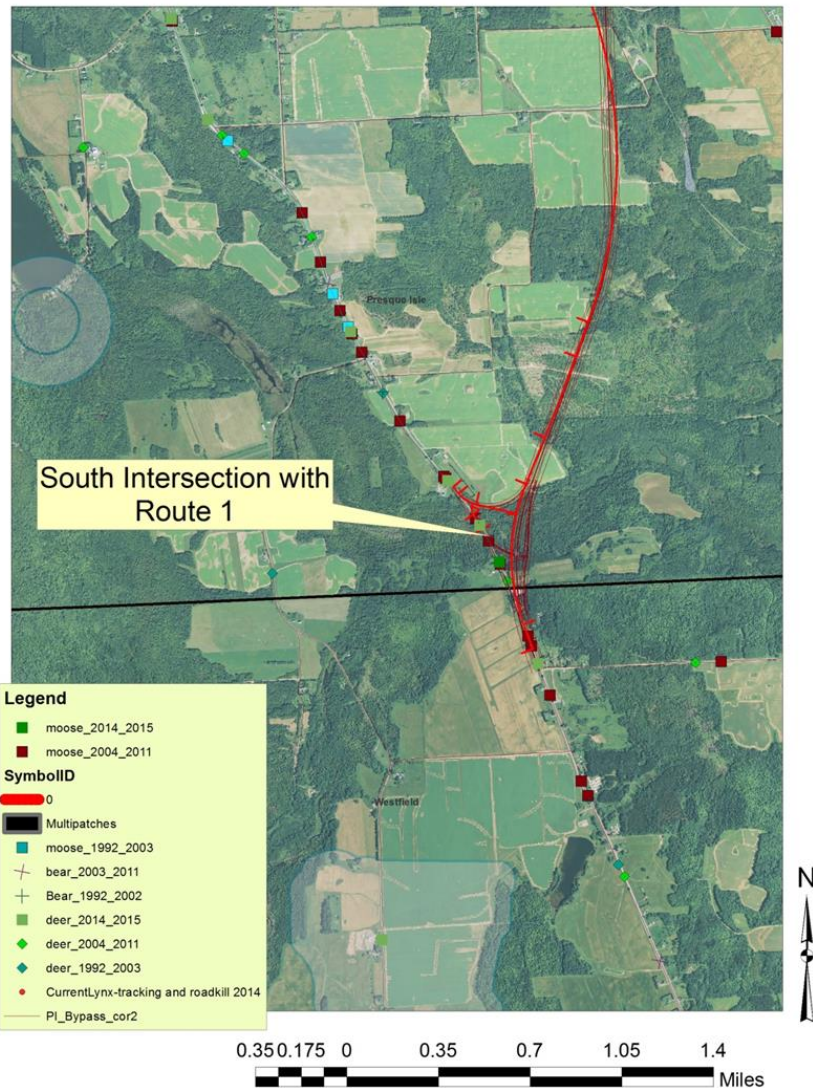


Brewer To Eddington New Road, under construction Deer Jumpout



Presque Isle Bypass Large Animal Crash Hotspot WIN 6462

Presque Isle



Use of Wildlife Underpasses Where next?

